



- |   |
|---|
| 1 |
| 2 |

1\_ pav.: atacama blanco  
60x60 / rev.: atacama  
beige 30x60  
2\_ pav.: atacama gris  
60x60

# atacama

THROUGHBODY PORCELAIN TILES - FULL BODY  
PORCELÁNICO TÉCNICO - TODO MASA

**30x60 / 60x60 / 45x45 / 15x15cm**

**11<sup>13/16"</sup>x23<sup>5/8"</sup> / 23<sup>5/8"</sup>x23<sup>5/8"</sup> / 17<sup>3/4"</sup>x17<sup>3/4"</sup> / 5<sup>7/8"</sup>x5<sup>7/8"</sup>**

## GRESPANIA

GRESPANIA S.A.  
CV-16  
Ctra. Castellón-Alcora km 2,200  
P.O.Box 157  
12080 Castellón  
tel +34 964 34 44 11  
fax +34 964 34 44 01  
mail@grespania.com

WWW. GRESPANIA.COM

GRESPANIA S.A dispone de un  
sistemwa de gestión certificado  
de acuerdo a las normas ISO  
9001:2008 certificado N° 44  
100 127697 e ISO 14001:2004  
certificado N° 44 104 127697 en sus  
plantas de NULES y CASTELLON

GRESPANIA S.A. uses a  
managment system within its'  
facilities of Nules and Castellón  
in accordance with ISO 9001:2008  
certificate N° 44 100 127697 and  
ISO 14001:2004 certificate  
N° 44 104 127697

**GRESPANIA**  
CERAMICA

**GRESPANIA**  
CERAMICA

# atacama

THROUGHBODY PORCELAIN TILES - FULL BODY  
PORCELÁNICO TÉCNICO - TODO MASA

**30x60 / 60x60 / 45x45 / 15x15cm**

**11<sup>13/16"</sup>x23<sup>5/8"</sup> / 23<sup>5/8"</sup>x23<sup>5/8"</sup> / 17<sup>3/4"</sup>x17<sup>3/4"</sup> / 5<sup>7/8"</sup>x5<sup>7/8"</sup>**





# atacama

THROUGHBODY PORCELAIN TILES - FULL BODY  
PORCELÁNICO TÉCNICO - TODO MASA

30x60 / 60x60 / 45x45 / 15x15cm  
11<sup>13/16"</sup>x23<sup>5/8"</sup>/23<sup>5/8"</sup>x23<sup>5/8"</sup>/17<sup>3/4"</sup>x17<sup>3/4"</sup>/5<sup>7/8"</sup>x5<sup>7/8"</sup>

# atacama

blanco / gris / marengo / negro / beige / tabaco

THROUGHBODY PORCELAIN TILES - FULL BODY  
PORCELÁNICO TÉCNICO - TODO MASA

30x60 / 60x60 / 45x45 / 15x15cm  
11<sup>13/16"</sup>x23<sup>5/8"</sup>/23<sup>5/8"</sup>x23<sup>5/8"</sup>/17<sup>3/4"</sup>x17<sup>3/4"</sup>/5<sup>7/8"</sup>x5<sup>7/8"</sup>



60x60 Atacama  
Blanco **52AT45R** [07-83]  
60x60 Atacama Antislip  
Blanco **52ATA45** [07-89]



30x60 Atacama  
Blanco **46AT-42** [07-76]  
30x60 Atacama Rectificado  
Blanco **46AT42R** [07-82]



45x45 Atacama  
Blanco **42AT-48** [07-70]



15x15 Atacama antislip  
Blanco **06TATA4** [05-12]



60x60 Atacama  
Gris **52AT35R** [07-83]  
60x60 Atacama Antislip  
Gris **52ATA35** [07-89]



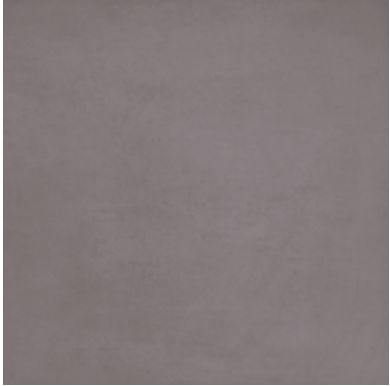
30x60 Atacama  
Gris **46AT-32** [07-76]  
30x60 Atacama Rectificado  
Gris **46AT32R** [07-82]



45x45 Atacama  
Gris **42AT-38** [07-70]



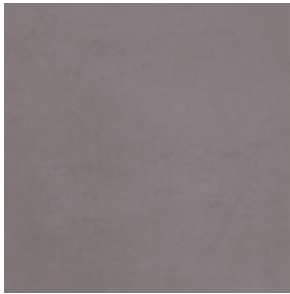
15x15 Atacama antislip  
Gris **06TATA3** [05-12]



60x60 Atacama  
Marengo **52AT55R** [07-83]  
60x60 Atacama Antislip  
Marengo **52ATA55** [07-89]



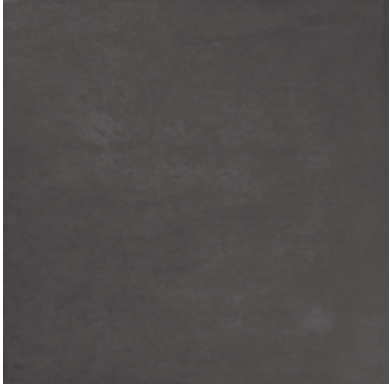
30x60 Atacama  
Marengo **46AT-52** [07-76]  
30x60 Atacama Rectificado  
Marengo **46AT52R** [07-82]



45x45 Atacama  
Marengo **42AT-58** [07-70]



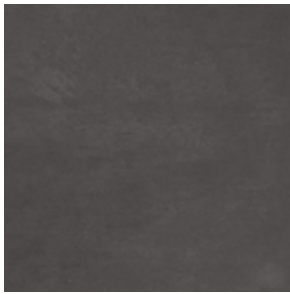
15x15 Atacama antislip  
Marengo **06TATA5** [05-12]



60x60 Atacama  
Negro **52AT59R** [07-83]  
60x60 Atacama Antislip  
Negro **52ATA95** [07-89]



30x60 Atacama  
Negro **46AT-92** [07-76]  
30x60 Atacama Rectificado  
Negro **46AT92R** [07-82]



45x45 Atacama  
Negro **42AT-98** [07-70]



15x15 Atacama antislip  
Negro **06TATA9** [05-12]



60x60 Atacama  
Beige **52AT75R** [07-83]  
60x60 Atacama Antislip  
Beige **52ATA75** [07-89]



30x60 Atacama  
Beige **46AT-72** [07-76]  
30x60 Atacama Rectificado  
Beige **46AT72R** [07-82]



45x45 Atacama  
Beige **42AT-78** [07-70]



15x15 Atacama antislip  
Beige **06TATA7** [05-12]



60x60 Atacama  
Tabaco **52AT25R** [07-83]  
60x60 Atacama Antislip  
Tabaco **52ATA25** [07-89]



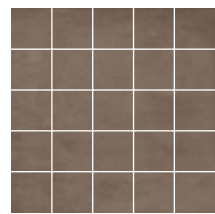
30x60 Atacama  
Tabaco **46AT-22** [07-76]  
30x60 Atacama Rectificado  
Tabaco **46AT22R** [07-82]



45x45 Atacama  
Tabaco **42AT-28** [07-70]

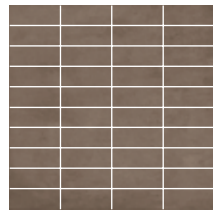


15x15 Atacama antislip  
Tabaco **06TATA2** [05-12]



Paine 30x30  
Tabaco **41PA-20** [09-05]  
Blanco **41PA-40** [09-05]  
Gris **41PA-30** [09-05]

Marengo **41PA-50** [09-05]  
Negro **41PA-90** [09-05]  
Beige **41PA-70** [09-05]



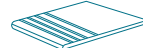
Chiloe 30x30  
Tabaco **41CH-20** [09-30]  
Blanco **41CH-40** [09-30]  
Gris **41CH-30** [09-30]

Marengo **41CH-50** [09-30]  
Negro **41CH-90** [09-30]  
Beige **41CH-70** [09-30]

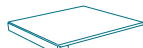


14,5x60 / 9,7x60 / 4,7x60 Atacama Mix 60  
Tabaco **57AT2MX** [05-84]  
Blanco **57AT4MX** [05-84]  
Gris **57AT3MX** [05-84]

Marengo **57AT5MX** [05-84]  
Negro **57AT9MX** [05-84]  
Beige **57AT7MX** [05-84]



**Peldaño Porcelánico Romo Huella**  
30x30 [12-80]  
30x60 [13-70]



**Peldaño Escudra**  
30x30 [13-97]  
30x60 [20-60]



**Peldaño Escudra Ang.**  
30x30 [20-60]  
30x60 [20-70]



**Rodapié**  
8x45 [11-08]  
8x60 [12-46]

**T** PORCELÁNICO TÉCNICO / TODO MASA  
PORCELAIN TILES / FULL BODY



60 x 60  
30 x 40  
15 x 15

45 x 45  
30 x 60

10 mm

R9  
C1

natural










R10  
C2/C3

antislip

A

suave

medida cm	nº pzas/box	m²/box	kg/box	boxes/pallet	m²/pallet	kg/pallet
60x60	3	1,08	25,75	32	34,56	824,00
45x45	5	1,01	23,30	66	66,66	1.537,80
30x60	6	1,08	24,80	40	43,20	992,00
15x15	20	0,45	7,80	100	-	-
30x30 mallado	9	0,81	18,45	38,88	38,88	717,34

PORCELÁNICO TÉCNICO / TODO MASA PORCELAIN TILES / FULL BODY																															
																															
SERIE SERIES	REFERENCIA REFERENCE	UNE-EN ISO 10545-3 AA*	UNE-EN ISO 10545-4 R-F*	UNE-EN ISO 10545-7 R-CH-T*	UNE-EN ISO 10545-11 R-C*	UNE-EN ISO 10545-14 M*	UNE-EN ISO 10545-13 A-L*		A-P*	A*/B*	UNE-EN ISO 10545-6	UNE-EN ISO 10545-12 R-HE*	UNE-EN ISO 10545-13 DIN	NORMA ASTM-C1028-96 FD	FW	UNE-ENV 12523 /2003	NORMA DIN 51077	NORMA BS 7476 PTV													
ATACAMA	NEGRO, MARENGO, TAB, GRIS, BL, BGE	<0,1%	>50N/mm²	Resiste	-	5	UA	UA	ULA		<150mm³	Resiste	R-9	>0,6	>0,6	Clase 1		-													
ATACAMA ANTISLIP	NEGRO, MARENGO, TAB, GRIS, BL, BGE	<0,1%	>50N/mm²	Resiste	-	5	UA	UA	ULA		<150mm³	Resiste	R-10	>0,6	>0,6	Clase 2 / 3	A	36+													